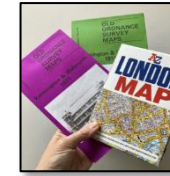


Year:3 and 4



Conservation and Our Local Area

Enquiry Question: How has human activity affected the human and physical features of my local area over time and its environmental concerns?



Key Facts:

- **Geography** is the study of the earth's surface, its atmosphere and its features, e.g. towns, cities, rivers, volcanoes, etc..
- **Human geography** -where people live, what they do and how they've used the land, e.g., roads, farms, buildings, homes, etc.
- **Physical geography** is the study of the earth's natural features, e.g., rivers, deserts, mountains, oceans, forests, etc.
- **Conservation** - The protection of the environment and the wildlife that lives in it.
- **Land use** is when humans use an area of land for a purpose to meet their wants and needs.
- There are five main types of land use: **residential, agricultural, recreational, transport and commercial.**
- **Climate change** (global warming). It is the process of our planet heating up.
- We study the **human causes of climate change** and the effect it has on the planet.
- Learning about climate change also involves **exploring possible solutions to the problem.**
- The first documented evidence of Dulwich is in 967 AD as a hamlet outside of London.
- In the 1890s, Dulwich Park and Peckham Rye were opened, which were formerly farmland.
- Significant development during **industrial revolution**. Population growth, new homes and businesses.
- Between 1871 and 1881 over 5,000 houses were built in East Dulwich as the small hamlet became part of the rapidly expanding London suburbs.
- **Dulwich**, along with the rest of London, has grown over many years, from wide open fields to increased traffic, population, businesses and residents.
- London's last functioning toll gate is in Dulwich.

Term: Summer 1

Glossary:

Human geography	where people live, what they do and how they've used the land, e.g., roads, farms, buildings, homes, etc.
Physical geography	is the study of the earth's natural features, e.g., rivers, deserts, mountains, oceans, forests, etc.
Field Work	When you go outside to find out things about a location.
Route	A way to travel from point A to point B.
Conservation	The protection of the environment and the wildlife that lives in it.
Pollution	When the environment is dirtied or harmed by waste, chemicals or other harmful things.
Climate change (or global warming)	Is the process of our planet heating up due to human activity (e.g. pollution, deforestation, etc).

Key Questions:

How has land use in Camberwell changed over the last 200 years?

What contributed to those changes?

What are Dulwich's environmental concerns?

What could be done to improve this?

CLASSES 3LS, 3NI, 3/4BW, 4GS and 4BG

Homework to be completed and returned by

Friday 23rd May 2025

Topic Homework

Reading

Remember to read each day and get an adult to sign your reading record. Don't forget to collect your rewards for reading!



Dear Parents and Carers,

Our topic this half term is Conservation in Our Local Area! Homework can be completed by the children on their own or with an adult. As the children love to show off their wonderful work, they will have an opportunity to share their creations in class.

Spelling

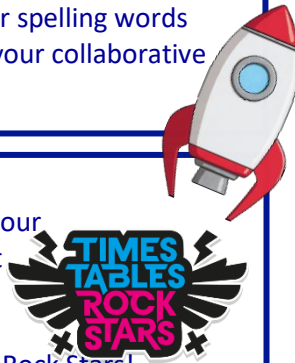
Don't forget spelling rules for your spelling words will go home with you Friday for your collaborative test the following week!

MATHS

This term we are continuing with our Maths Rockets based on different mathematical skills.

Don't forget to revise each week!

Please also log in to Times Tables Rock Stars!



WRITING AND GEOGRAPHY

You have a scrap book to use to complete your homework project. Over the next six weeks you could complete some of these activities or make some up of your own.

TRY TO COMPLETE AT LEAST ONE OF THE WRITING TASKS

1. Write a poem about your community – who do you see? What do you enjoy doing? What makes it great?
2. Write a fact file about littering and its impact on the environment.
3. Design and write a tourist leaflet all about your local area (Dulwich, Camberwell, London) – describing points of interest (museums, galleries, restaurants, etc), including pictures, travel links and tips for visitors.

NOW CHOOSE SOME OR ALL OF THESE

1. Make a piece of art, or a new useful object, using recycled objects – newspapers, plastic bottles, cardboard boxes.
2. Draw a map of your local community, including a key and symbols to represent your home, school, local clubs, etc.
3. Design a poster, encouraging others to look after their community and stop littering.

Home Learning Links

BBC Bitesize – What is field work?

<https://www.bbc.co.uk/bitesize/articles/zr6nscw>

What field work can I do in my local area?

<https://www.bbc.co.uk/bitesize/topics/zqj3n9g/articles/zffx6v4>

What are maps?

<https://www.bbc.co.uk/bitesize/topics/zqj3n9g/articles/zjd66v4>

Oak National Academy – Villages, Towns and Cities, including 'my own'.

<https://www.thenational.academy/teachers/programmes/geography-primary-ks1-l/units/villages-towns-and-cities-28b9/lessons>

How to make a town map –

<https://www.youtube.com/watch?v=c1uewgx13nY>

Places to Visit:

Walk London - Beautiful and interesting walks can be found all across central and Greater London.

<https://tfl.gov.uk/modes/walking/top-walking-routes>

Short Walks to discover London -

<https://londonblog.tfl.gov.uk/2020/09/01/short-local-walks/>

Recommended Reads:

