

# Keyworth Primary School Newsletter

Part of The Gem Federation

[www.thegemfederation.co.uk](http://www.thegemfederation.co.uk)

Executive Headteacher: Sarah Beard

Head of School: Ray Capper

Address: Faunce Street, London, SE17 3TR

Email: [keyworth@gemfed.co.uk](mailto:keyworth@gemfed.co.uk)

Telephone: 020 7 735 1701



Friday 22<sup>nd</sup> November 2024

## Term Dates 2024-2025

September 2024							October 2024							November 2024							December 2024						
Mo	Tu	We	Th	Fr	Sa	Su	Mo	Tu	We	Th	Fr	Sa	Su	Mo	Tu	We	Th	Fr	Sa	Su	Mo	Tu	We	Th	Fr	Sa	Su
						1	1	2	3	4	5	6	1	2	3	1	2	3							1		
2	3	4	5	6	7	8	7	8	9	10	11	12	13	4	5	6	7	8	9	10	2	3	4	5	6	7	8
9	10	11	12	13	14	15	14	15	16	17	18	19	20	11	12	13	14	15	16	17	9	10	11	12	13	14	15
16	17	18	19	20	21	22	21	22	23	24	25	26	27	18	19	20	21	22	23	24	16	17	18	19	20	21	22
23	24	25	26	27	28	29	28	29	30	31				25	26	27	28	29	30		23	24	25	26	27	28	29
30																					30	31					

January 2025							February 2025							March 2025							April 2025						
Mo	Tu	We	Th	Fr	Sa	Su	Mo	Tu	We	Th	Fr	Sa	Su	Mo	Tu	We	Th	Fr	Sa	Su	Mo	Tu	We	Th	Fr	Sa	Su
		1	2	3	4	5						1	2						1	2		1	2	3	4	5	6
6	7	8	9	10	11	12	3	4	5	6	7	8	9	3	4	5	6	7	8	9	7	8	9	10	11	12	13
13	14	15	16	17	18	19	10	11	12	13	14	15	16	10	11	12	13	14	15	16	14	15	16	17	18	19	20
20	21	22	23	24	25	26	17	18	19	20	21	22	23	17	18	19	20	21	22	23	21	22	23	24	25	26	27
27	28	29	30	31			24	25	26	27	28			24	25	26	27	28	29	30	28	29	30				
														31													

May 2025							June 2025							July 2025							August 2025						
Mo	Tu	We	Th	Fr	Sa	Su	Mo	Tu	We	Th	Fr	Sa	Su	Mo	Tu	We	Th	Fr	Sa	Su	Mo	Tu	We	Th	Fr	Sa	Su
			1	2	3	4							1		1	2	3	4	5	6					1	2	3
5	6	7	8	9	10	11	2	3	4	5	6	7	8	7	8	9	10	11	12	13	4	5	6	7	8	9	10
12	13	14	15	16	17	18	9	10	11	12	13	14	15	14	15	16	17	18	19	20	11	12	13	14	15	16	17
19	20	21	22	23	24	25	16	17	18	19	20	21	22	21	22	23	24	25	26	27	18	19	20	21	22	23	24
26	27	28	29	30	31		23	24	25	26	27	28	29	28	29	30	31				25	26	27	28	29	30	31
							30																				

School Holidays	INSET Days	Tutorial Day	Bank Holidays
-----------------	------------	--------------	---------------

## Important dates for your diary

Event		Class assemblies	
14.10.24	Year 5 parent workshop	16.10.24	6MM
17.10.24	Year 3/4 parent workshop	23.10.24	2PH
21.10.24	Year 6 parent workshop	20.11.24	6CS
06.12.24	Winter fair	27.11.24	4AB
11.12.24	Christmas lunch		
13.12.24	Enterprise fair		
16.12.24	Years 4, 5 and 6 Christmas performance at 9:10am		
17.12.24	Years 1, 2 and 3 Christmas performance at 9:10am		
18.12.24	Reception Christmas performance at 9:10am		
19.12.24	Little Stars and Nursery Christmas performance at 9:10am		
19.12.24	Class parties		

## Celebrations

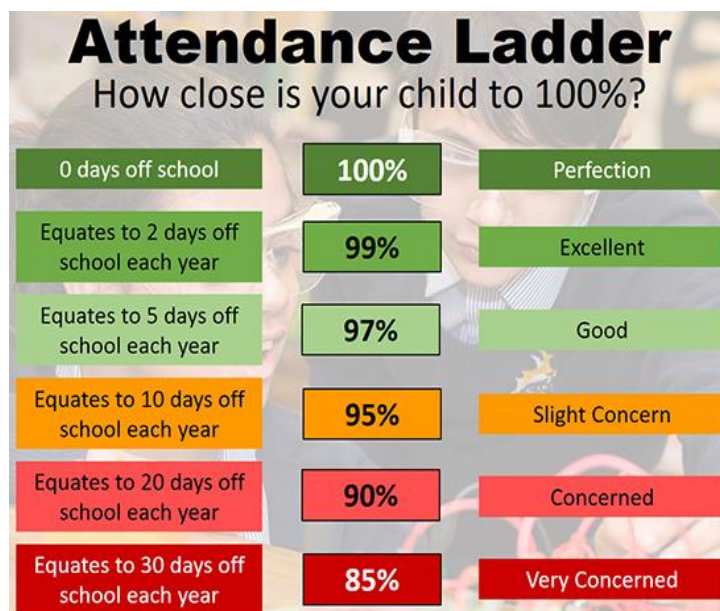
Class	Star of the Week	Writer of the Week	Mathematician of the Week	Reader of the Week	Presenter of the Week
Pearls	Frankie	Aasiyah	Naleya	Stella	Mason
Opals	Mohamed	Hannah	Freddie	Kyrie	Ewole
Moonstones	Alissa	Ibrahim	Oliver	Logan	Felicia
2PH	Afia	Fatma	Muhannad	Romario	Thomas

Class	Star of the Week	Writer of the Week	Mathematician of the Week	Presenter of the Week
3EB	Zanetor	Viktor	Ava	Mohammed
3GC	Jasmine	Isa	Kayleigh	Fedor
4AB	Jake	Mariam	Amanah	Idris
4HE	Kallum	Jeremiah	Elise M	Naila
5AA	Tilly	Amy Jane	Keyla	Kieron
5BH	Isabella	Ava	Ben	Petr
6CS	6CS	Manuella	Mohammed	Jayme
6MM	6MM	Ridwaan	Chukunazor	Valentina

This week's gem winners are....	Diamonds
This week's treasure chest winners are...	Opals 3EB
This week's healthy lunch winners are...	Naila 1ER Munira 4AB

## Attendance

Class	Attendance
Pearls	93.04
Opals	94.44
Moonstones	96.88
2PH	93.75
3EB	95.19
3GC	96.18
4AB	90.67
4HE	92.36
5AA	92.65
5BH	98.61
6CS	99.00
6MM	91.35
Whole school	94.02
School average (year)	94.5%
National average (year)	92.8%
School target	96%



This week's attendance winners are **6CS**

Classes with the best attendance this term so far...

1 <sup>st</sup>	2 <sup>nd</sup>	3 <sup>rd</sup>
5BH 97.26%	2PH 96.84%	3EB 96.83%

## Latest News

### Attendance

# School attendance is a priority!

Next week I will be sending out attendance letters to families of children who have been persistently absent from school this academic year (attendance below 90% - at least 1-day absence every 2 weeks). This is the first stage of our attendance procedure and, should attendance not improve within a set period of time, the school will have to make referrals to Southwark/Lambeth Councils with a view to further action being taken.

I have launched the attendance raffle and the prizes have begun to arrive - **congratulations to the 95% of children who came to school every day this week, Monday to Friday**. It is factual that a child's level of attendance to school directly impacts their academic performance, wellbeing and future successes - **the better a child's attendance the better they will achieve in all areas**.

As a reminder of our raffle...

## Keyworth Attendance Raffle

1. All children will receive a raffle ticket should they attend school for a whole week from Monday to Friday. Every week they attend for a whole week is equivalent to 1 raffle ticket being received. This will be back-dated to the start of the academic year.
2. At the end of each half term, there will be a whole-school attendance raffle draw where 3 children will be selected as raffles winners. The greater your child's attendance, the greater their chance of doing well in school and the greater their chance of winning the attendance raffle...



## Every day at school matters!

### Colder weather

As the days get shorter and the weather worsens, please ensure that your children are prepared when they come to school. Weather dependent, the children will continue to play outside so extra layers and waterproofs are necessary. **With the additional items being brought into school, make sure you label your children's belongings so that they can be returned should they become lost.**

### Jewellery

Children should not be wearing any jewellery (other than stud or small sleeper earrings) to school unless it is essential for religious reasons. This is because jewellery can get caught or pulled while children are playing which can be dangerous to children or can damage the jewellery. Children cannot take part in PE while wearing jewellery and items are often lost when removed for PE, so please leave all jewellery at home.

## Compass - communication between school and home

Keyworth is now using Compass as our main form of communication for parents/carers.

**All parents/carers need to start using Compass School Manager as our Parent Portal.**



Using our Parent Portal, you will be able to:

- View up-to-date attendance information;
- Enter upcoming or past absences for your child, so you no longer need to call the school in the morning;
- Access information regarding upcoming events and news.

In the future we will also be adding the capacity to:

- Access your child's School Reports;
- Book Parents Evening and Tutorial Day appointments;
- Book and pay for clubs and trips.

### **Accessing Compass**

Compass is a web-based system that is accessible on any modern web browser or by using the 'Compass School Manager' app available for iOS or Android. We recommend that you download the app to your phone for easy use.

Once you log in to the app, there will be a User Guide available. Please refer to an email that you will have received from Keyworth about Compass, which contains a video tutorial to support you.

If you have any problems, please do not hesitate to get in touch.

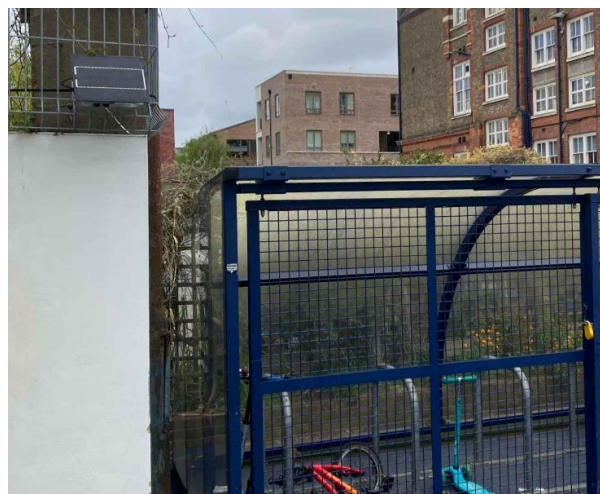
### **Air quality at Keyworth**

You will be aware that in recent years we have been focusing on improving children's health. This has been through initiatives such as an updated packed lunch policy, parent food and lifestyle workshops, healthy crudités added to the afterschool club menu, Southwark Council attending to make housing appointments and a continuation of our free afterschool sports club offer.

We have recently had installed a Breathe London air quality monitor in the playground. This is in collaboration with Public Health Southwark who are

collecting data from sites across Southwark with a view to identifying where support is needed in tackling pollution. Click on the link below for "live" information about pollution in the Keyworth playground, as well as an interactive map for other locations in Southwark:

[Keyworth air quality monitor](#)





KEYWORTH PRIMARY  
SCHOOL FRIENDS  
ASSOCIATION

# LOOKING FOR Small businesses

TO RENT A STALL  
AT OUR UPCOMING  
WINTER FAIR

- CRAFT MAKERS
- PHOTOGRAPHY
- FOOD & DRINKS
- OTHERS WELCOME

From £15

Email us: [Keyworthfriends@gmail.com](mailto:Keyworthfriends@gmail.com)

FAIR HELD AT KEYWORTH PRIMARY SCHOOL,  
KENNINGTON, ON THE 6TH DEC 2024



### Keyworth Friends' Easy Fundraising

It can be a win for both of us! When you grab your Black Friday bargains, start at the **easyfundraising website or app** and over 8,000 retailers will donate to Keyworth Friends every time you grab a bargain! Sign up and help us raise more at:

<https://bitly.cx/UwA4RQ>

# Turn Black Friday into Give Back Friday

Raise donations for Keyworth Friends  
when you shop the sales



[ Moments ] that **make (it) count**

RAISE A DONATION

# Wellbeing Support Team Keyworth Primary School

GROUNDWORK LONDON



## What Is The Wellbeing Support Team?

The Wellbeing Support Team is funded by the Department of Health and the Department of Education and currently operates in 27 schools across Southwark.

The team is comprised of **Educational Wellbeing Practitioners that are trained in providing evidenced based wellbeing support to children and families** in school based settings.

## What Do We Offer?

Educational Wellbeing Practitioners offer support to parents/carers on Mondays at Keyworth. **This support is for those who would like guidance in managing their child's fears and worries or common behaviour problems.**

Wellbeing practitioners provide **6-8 sessions of parent/carer led guided self-help** cognitive behavioural therapy (CBT), **including practical techniques and strategies that can be used at home.**

## What Do Families Say About Us?

*"It lifted our confidence and it was nice to hear what we were doing well as parents"*

*"I was listened to and given good advice and practical suggestions"*

*"It was useful and I would love for more people to be able to have this help"*

*"I was offered personalised support around my child needs, not a one size fits all"*

*"Thank you for everything, your support has been so helpful and things have improved"*

## How Can I Access Support?

If you would like to access the support on offer, please contact:  
**Lori Knight**  
([lknight@gemfed.co.uk](mailto:lknight@gemfed.co.uk))

## Children in Need

More from Children in Need... thank you to everyone who donated - we raised £102.04.





## Interfaith week

Having honed their craft by supporting year 1 make samosas, year 6 made some for themselves! Well done to the children who did the washing up afterwards... I hope that this is replicated at home!



## 6MM IntoUniversity focus week

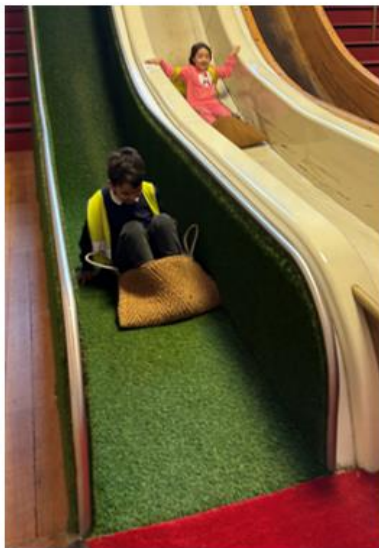
It was class 6MM's turn for their IntoUniversity focus week. They enjoyed a fantastic design workshop at the Young V&A which was followed by an exploration of the interactive museum. In school the children completed numerous activities to learn about university life and consider their future goals. For further information about IntoUniversity, click on the link below:

[IntoUniversity](#)



### Year 3 - Science Museum visit

3GC went to the Wonderlab in the Science Museum this week. They had tonnes of fun exploring matter, force, maths, electricity, light and sound through different experiments.



### Cooking group

This week our cooking group savoured the comforting flavours of their freshly prepared tomato pasta dish, which was crafted with tomatoes and a touch of love for a deliciously satisfying dish!



# GIRLS INDOOR CRICKET PROGRAMME

**SOUTH THAMES COLLEGE  
STATE SCHOOLS ONLY  
£15 REGISTRATION FEE  
FREE COACHING SESSIONS  
FOR 15 WEEKS**



**Start Date Saturday 16th November  
2024**

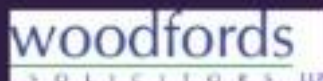
Day	Time	Age Group
Saturday	3:30pm - 4:45pm	U12 & U13
Saturday	6:10pm - 7:25pm	U14 & U15
Sunday	9:30am - 10:45 am	U7 & U8
Sunday	10:50am - 12:05pm	U9 & U10
Sunday	12:10pm - 01:25pm	U11



**REGISTER YOUR  
INTEREST NOW**



**FOR MORE INFORMATION EMAIL  
GALLEYNE@ENABLELC.ORG**



In partnership with

**enable.**  
For happy, healthier communities.  
Not for profit.

### Support for families 2 - Food and Fun holiday programme

If your child gets benefits-related free school meals, they can join one of many Food and Fun holiday clubs in Southwark running from **23<sup>rd</sup> December to 3<sup>rd</sup> January** (excluding public holidays). The weekday clubs run fun activities and provide healthy and free food. Further information can be found by clicking on the link below:

[Food and Fun](#)

### Support for families 3 - Citizens Advice cost of living service

You can get advice from Citizens' Advice and the council on pension credit, winter fuel allowance, energy bills, welfare support, council tax support and much more.

Drop in anytime between **10:00am and 1:00pm on Thursday 28 November** at the Dockland Settlements Rotherhithe, 400 Salter Road, SE16 5AA.

Further information can be found by clicking on the link below:

[Citizens Advice - Southwark](#)

### Word of the Week

This week's *Word of the Week* is **amateur**. Please discuss its meaning with your child/ren and encourage them to share what they have learned with their teachers in school to receive gems. Do they know the origin? Can they use the word correctly in a sentence? Can they identify and explain the meaning of alternative forms e.g. **amateurish**. Can they identify any synonyms or antonyms?

Please find below previous words that we have used in school:

<b>Previous words</b>	accompanying, variety, frequent, sincere, appreciating, tolerant, immediate, guarantee, occupying
-----------------------	---

I would like to wish you and your family a wonderful weekend!

Ray Capper  
Head of School